



# FOR LEASE

## **BE** BALDWIN EAST A COMMERCIAL & LIGHT INDUSTRIAL PARK

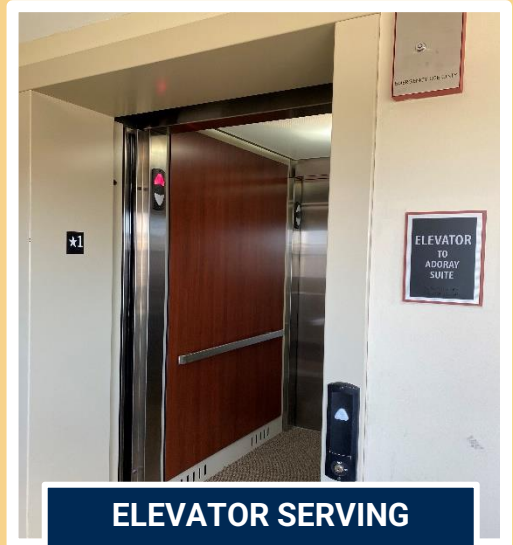
**100,000 SF TOTAL**

Baldwin East is a 12 ½ acre Commercial and Light Industrial Park located just a short distance from I-94 in Baldwin, Wisconsin. The property consists of the former Dairyland Power Building, which is a Multi-Tenant 40,000 SF Building, along with a 60,000 SF Multi-Tenant Office/Warehouse Building.



**OFFICE/SHOWROOM**  
1<sup>ST</sup> LEVEL

- Office & Showroom Space
- Warehouse & Production Space
- Outdoor Storage
- Dock & Drive-In Doors
- Heavy Three Phase Power



**ELEVATOR SERVING**  
2<sup>ND</sup> LEVEL



FOR MORE INFORMATION CONTACT:

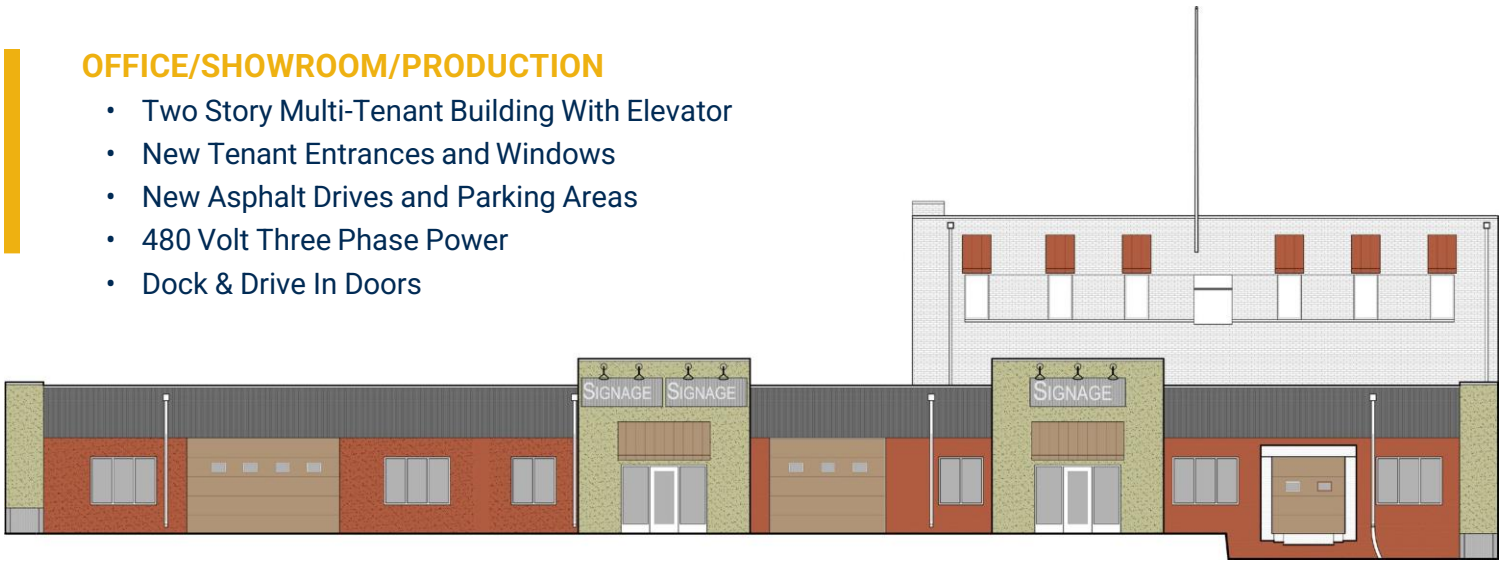
**Kevin J. LaCasse** | 651.430.2024 | [klacasse@greystone-commercial.com](mailto:klacasse@greystone-commercial.com)

# REMODEL UNDERWAY!

## DAIRYLAND BUILDING

### OFFICE/SHOWROOM/PRODUCTION

- Two Story Multi-Tenant Building With Elevator
- New Tenant Entrances and Windows
- New Asphalt Drives and Parking Areas
- 480 Volt Three Phase Power
- Dock & Drive In Doors



SOUTHSIDE VIEW



OFFICE/SHOWROOM SPACE AVAILABLE



PRODUCTION/WAREHOUSE SPACE AVAILABLE



SOUTHSIDE VIEW

# NEW FACADE COMING! DAIRYLAND SHOWROOM

## SHOWROOM/PRODUCTION/WAREHOUSE

- New Parapet Wall, Windows & Signage Coming
- High Ceiling & Open Floor Plan
- 480 Volt Power Available
- Interior & Exterior Dock Doors



AVAILABLE NOW



CONTIGUOUS SPACE AVAILABLE



WEST SIDE LOADING DOCKS



COMMON DOCK AREA

# IMPROVEMENTS COMING!

## 60,000 SF BUILDING

### OFFICE/SHOWROOM/WAREHOUSE

- New Windows, Entries and Signage Coming
- New Asphalt Drives and Parking
- 480 Volt Three Phase Power
- Dock & Drive In Doors
- Possible Outside Storage



EAST SIDE VIEW



PRODUCTION/WAREHOUSE SPACE AVAILABLE



TENANT ENTRANCE WITH SIGNAGE



ADDITIONAL PARKING